

The Resident

Billericay District Residents' Association



"Help us to help you"



July/August 2024



D Day 80th Anniversary Beacon **PAGE 4**

***The Zero Hour Campaign –
Tackling the Climate Crisis*** **PAGE 4**

Street Pastors Update **PAGE 4**

***What's On For Summer in
Billericay*** **PAGE 10**

Your subscription for membership costs £3, which includes 10 editions of *The Resident*.

Visit the BDRA Website at: www.bdra.org

Billericay Needs You!

BDRA VACANT ROLES

Chair Good Chairs are – Assertive, Decisive, Good Listeners, Adaptable, Diplomatic, Impartial Attentive and Concise.

Do you think you have these skills? Do you care about the future of Billericay? Have you some time to spare?

You sound just like the type of person we are looking for. BDRA now has a vacancy for a Chair.

If you are interested, please contact resident@bdra.org

Road Reps

We are desperately in need of new volunteers to help us distribute and manage our magazine. Can you spare just a few hours a month to help us deliver our magazine to your street?

A Road Representative usually covers the same roads once a month.



Balmoral Close, James Square

Contact Jan Weir jimandjanweir@gmail.com

GB27 Crays View and Langham Crescent

Contact the BDRA resident@bdra.org

Area Membership Secretary for Great Burstead & South Green

Membership Secretaries look after their particular area. The role will normally take a few hours a month and would suit anyone looking to give something back to the community. Use of email would be an advantage. Interested?

Contact resident@bdra.org

Editor

We are looking for someone preferably with media experience to produce our monthly magazine, The Resident. You will be required to research and write articles of local interest and liaise with other local groups who will provide articles. You should provide the draft magazine electronically in one document, our printers will do the design and layout and liaise with you on approval of the draft.

Contact resident@bdra.org



REMINDER

We would like to remind our members that your annual subs of £3 are now due. Your road rep will be knocking on your door to collect it, if they haven't done so already. If you have elected to pay by bank transfer please make your payment in this manner as soon as possible. If you don't already, and would prefer to pay by bank transfer please email resident@bdra.org for the bank details you will require.

We can now also offer an e-version of The Resident. If you opt to receive the e-version you will be required to pay your subs by bank transfer. Please email resident@bdra.org, if you would prefer to receive The Resident in this format.

This map appeared under BDRA news in the June Edition, unfortunately the print was too small to identify where the areas of ancient woodland were positioned; we are therefore publishing it again in a larger format. The map referred to the "Ancient Woodland Inventory", which did not include the areas highlighted. Application has been made to Natural England for 5 small west Billericay woods to be added. There are three (in green on the map) where NE have responded in agreement, and these woods are now on the Inventory. They'll consider the other two (in amber) in due course.



BDRA NEWS



BDRA Annual General Meeting

The BDRA Annual General Meeting, was held at Emmanuel Church on the 22nd May. Thank you all those who attended and listened to an interesting talk from Phil Norton about the work of the Billericay Street Pastors.

The AGM draft minutes of the meeting can be viewed on the website at <https://bdra.org>

Please refer any comments or questions to resident@bdra.org

THE RESIDENT is published by the Billericay District Residents' Association.

Vice Chair: Stephen Chapman. Editor: Lisa Ronchetti. Email: resident@bdra.org

BDRA website at: www.bdra.org

Designed and printed by

ACORS PRESS

FINEST QUALITY PRINTERS

Email printing@acorspress.co.uk

HAPA

Helen Arber Performing Arts

FIND US ON FACEBOOK!



IT'S YOUR TIME TO SHINE!

COME & JOIN ONE OF OUR MANY FUN AND EXCITING CLASSES!

SPACES STILL AVAILABLE FOR SEPTEMBER 2024!

☎ 01277 655881

✉ info@helenarberperformingarts.com

🌐 www.helenarberperformingarts.com

★ **JAZZ STREET MUSICAL** ★ **ACRO BALLET**
★ **TECHNIQUE AND CE THEATRE** ★ **TAP MODERN** ★

• The Billericay Theatre • 34 Radford Way • Billericay • CM12 0DX •

Letters to the Editor...

Hello,

Having read the letter from Angela Chudley in the June issue, I whole heartedly agree with every word she said. I am a long time resident of Billericay and have seen the state of our pavements get worse and worse over time. I am a sure footed walker but always very careful because there are so many tripping hazards. The state of our pavements and broken uneven curbstones is atrocious, an accident waiting to happen. When will Basildon Council do some very much needed repairs? Will they take responsibility if someone has a nasty accident?

Kind regards

Billericay Resident



VOLUNTEER OPPORTUNITY AT THE READING ROOMS

The Reading Rooms, who have recently been celebrating their 160th Anniversary are looking for an enthusiastic Trustee, with drive and energy, to undertake the role of Deputy Lettings Officer. This is a voluntary position and all volunteers are appointed on an equal opportunity basis. The current Trustees of the Committee are all interested members of the Local Billericay Community who are keen to ensure the continuation of this Charity. The lettings are vitally important and continue to provide a well-organized venue for the people of Billericay and District.

The role involves assisting the current Lettings Officer and deputizing when required. The ideal candidate would require IT skills as we have recently set up a new Booking computer system, to deal with much of the paperwork. The role would also involve meeting prospective hirers.

We are looking for a committed individual who is eager to share their knowledge, time and expertise.

Please look at the website www.thereadingrooms.org and for further information please contact the Chairman at chairman@thereadingrooms.org



CRYSTAL PRINT co UK

PRINTING SIGNAGE WORKWEAR

Building Plans
Colour while u-wait

Colour Copying
from 9p (based on 1000)

Van Graphics



E: sales@crystalprint.co.uk
W: www.crystalprint.co.uk
22 Western Rd, Billericay CM12 9DZ

☎ **01277
650661**

Billericay lights beacon to commemorate 80th anniversary of D Day landings

On 6 June Billericay Town Council lit the beacon to honour those whose bravery and sacrifice on D-Day 80 years ago gave us our freedom today. The commemoration began with a parade by RAFAC 2393 (Billericay) Squadron, the Billericay Detachment ACF and local scouts and guide groups.

Chairman Cllr Mark Thomas gave a speech welcoming everyone to the event then our Vice Chairman Councillor Devlin gave a history of D-Day where he spoke about Trooper Leonard Kemp from Billericay who was killed during the landings. He was only 20 years old when he was killed.



Youth Town Councillors George Wood and Alex Tomov read out an international tribute and we were honoured to have both the Citizen of the Year, Dave Sweet and the young Citizen of the Year Sophie Vaidya light the beacon together.

A bugler played the last post, followed by a 2-minute silence and then reveille.

**The trial was hard
We'll not complain
But trust in God
To meet again**

Over 150,000 brave soldiers launched the largest ever naval, air and land operation 80 years ago.

D-Day was a turning point in World War II. The sacrifices made saw Allied forces break through occupied Europe and change the course of history.

Soldiers, vehicles and equipment were loaded onto ships and crafts from the Tilbury Docks here in Essex.



Our very own Essex Regiment was ready to land on Gold Beach, four years after evacuating Dunkirk. In that time, it had joined the 2nd Battalion, which received large drafts of soldiers to bring it up to strength.

The bolstered battalion fought its way up Gold Beach and through the Battle for Caen, gaining crucial control of the city.

It fought bravely in the Second Battle of Arnhem – also called Operation Anger – and helped successfully liberate the city in 1945.

By the end of the war, the 2nd Battalion had suffered over 804 men killed, wounded or missing.

A number of events are being held across Essex this year to remember those who fought and gave their lives. Join us in paying tribute to the heroes of D-Day.

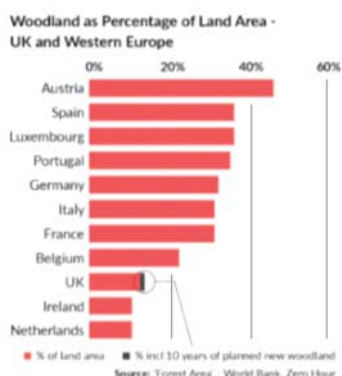
The Zero Hour Campaign – Tackling the Climate Crisis and our Declining Wildlife

There's a Bill that has already been presented in Parliament that needs further cross-party debate in the house to make it into law. The Bill combines the Climate Crisis and our declining wildlife and how it is imperative that both are addressed in unison.

There is an open letter on the Zero Hour (ZH) campaign website [zerohour.uk] that one can complete and send to our Basildon & Billericay constituency MP requesting that they also back the Bill. Many of us that are concerned about the future of our fast changing climate and the decline of our wildlife see this Bill as a "last chance saloon" to address a very serious situation. The ZH website takes time to trawl but all the relevant facts and warnings are (in our opinion) well laid out. It follows the science. The Billericay Tree Wardens (BTW) have signed the campaign as a group and its members have also been invited to

individually sign up. This is a national campaign backed by many cross-party MPs and parliamentarians and many organizations, businesses, societies and groups – 150 and 1525 respectively and still rising. As have 92 Local Authorities across the UK and 208 professional earth scientists (as of May 2024).

From the Billericay Tree Wardens



The same

But different.

COMMUNITY PASTORS

The Launch. Sat 15 June

From Saturday 15th June, you will no longer see Street Pastors patrolling the pubs and clubs at the weekend. But don't panic. We'll still be very much there. We're changing to **Community Pastors**, a new streamlined service combining street, rail and school operations. You'll see the same friendly faces. You'll get the same service, helping you without judgement, regardless of colour, culture or creed. You'll enjoy the same, high standards of integrity and confidentiality. But you will see a new, brighter and friendlier uniform. Join us at the Community Hub to help celebrate your new service. Pop in for some free buffet food, a friendly chat and to find out what's different.

Community Pastor Launch
Community Hub, 8-10 High Street
Free, pop-in event, 3-5pm
Saturday 15 June 2024

COMMUNITY PASTORS
Serving where it matters

The Billericay Theatre

SETTING THE STAGE FOR ENTERTAINMENT & EVENTS



DID YOU KNOW?
WE'RE AVAILABLE TO HIRE!



• boxoffice@thebillericaytheatre.co.uk • accounts@thebillericaytheatre.co.uk •
• The Billericay Theatre • 34 Radford Way • Billericay • CM12 0DX •

BILLERICAY COMMUNITY CINEMA



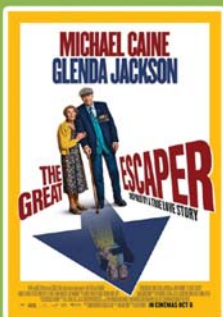
The Boat that Rocked
Thursday 5th September (2009, 15)

Tickets £5.00 from Billericaycine.com

Doors open 7pm, film 7:30pm

Wine, Billericay Brewery beers,
cocktail, mocktail, tea/coffee, snacks

FILM THURSDAY



The Great Escaper

Sunday 22nd September (2023, 12A)

Tickets £4.00 from Billericaycine.com

Doors open 2:30pm, film 3pm

A cuppa, home made cake,
a natter & a film
That's Sunday Matinee

SUNDAY MATINEE



WHERE TO FIND US

The Chantry Centre - between Ravens and The Chequers

BILLERICAYCINE.COM

sunday
7th
july

Rotary
CLUB OF BILLERICAY MAYFLOWER

SUN
corner
11AM
5PM

LET'S GO!

SUMMER

FEST

FREE EVENT

Billericay Mayflower Trust Fund Charity No. CIO1186535

**LIVE LOCAL MUSIC ON STAGE - CLASSIC CAR SHOW
TRACTION ENGINES - PUNCH N JUDY - FARMERS MARKET
BEER TENT - PIMMS - PROSECCO - HOT FOOD STALLS
CRAFT STALLS - KIDS FUN FAIR - BUNGEE & ZORB**

Sponsored by:

we swap
Swipe. Like. Unite.

Ground Control
Caring for our Environment

ROUND TABLE

Foster
with Thurrock Council
thurrock.org.uk/fostering

Andrew Skinner
WEALTH MANAGEMENT LTD

FREE Community & Charity Event

£50K

**RAISED 2024 FOR
LOCAL CHARITIES**



Registered Charity 1157058

Here we are in July already. What an exciting month lies ahead, first the election, then the Summerfest, and finally Jazz in the Park! The date for which is **Saturday July 20th from 4pm to 7.15pm.**

We have been running this event for the past 10 years and have had some great musicians playing for us ranging from young students to very experienced soloists and bands. This year we have three bands – the Ukulele Freeway players who were with us last year, then The Law – a brilliant guitar duo, who have played many times for us and finally a new band known as the Jam Factory. The event is always free – no tickets are needed, just turn up with a picnic and some garden chairs. And do remember some cash for the collection! All profits will be spent on the park. The event is covered by a free community music licence from PPL PRS. We look forward to seeing you

there and hope that the weather gods are in our favour!

Do you play chess or draughts? Many of you will have seen the new concrete table & chairs near the café, which appeared a couple of months ago. A chess set has kindly been donated by one of our members and the Men's Shed are making a set of draughts too. These will be available to hire for a small deposit of £5 from the café.

Chess is an interesting game that can benefit your mind and health in a number of ways. **It can improve your concentration, problem-solving, critical thinking, creativity, memory, and confidence. It can also help**



people cope with the symptoms of some health conditions, such as dementia, ADHD, and panic attacks. Chess can also bring people together and teach them how to win and lose gracefully. Draughts, on the other hand, is a much simpler game and easy to play. We hope that some of you will have a go and encourage others to play too?

We have recently been running a survey of park users to find out what everybody thinks about Lake Meadows. It has proved really popular and we have

already had some interesting feedback. In order to give a wide a number of local residents the chance to take part, we are extending the survey period into July. If you would like to complete the survey form, you can access it through this QR code:



F. E. FARRER
FUNERAL DIRECTORS & MONUMENTAL MASONS
5th Generation Family Owned Since 1860

Private Chapels of Rest
Home Visits Arranged
Pre Paid Funeral Plans

Memorial Headstones, Additional Inscriptions and Renovations
Rolls Royce & Daimler Fleet - Horse Drawn Carriages
Green Funerals & Woodland Burials

33 High Street Billericay 01277 622944
246 Hutton Road Shenfield 01277 216030

For Immediate Personal Attention, Day and Night
www.fcfarrer.co.uk

FLOURISHING FLOWERS

Janet Hibberd
Floral Designer
Specialising in funeral tributes
01277 650276
FlourishingFlowers.co.uk

Blasted Memories

Slate house signs made to measure.
Personalised glass engraved gifts for all occasions.
Contact Colin who will be happy to help you

01277 655613 / 07749 710489
www.blastedmemories.com [Facebook.com/blastedmemories1](https://www.facebook.com/blastedmemories1)

Your lasting legacy.

Leaving a gift in your Will to St. Luke's Hospice – even just a small percentage of your estate – is one of the most valuable and lasting ways you can support our caring work.

St. Luke's Hospice is an innovator in the delivery of palliative and end of life care. Your lasting legacy will help us to continue to provide relevant and much needed services for local people with life limiting illnesses, and their families.

Contact our Legacies team for a free information pack today:

Call: 01268 524973
Email: legacies@stlukeshospice.co.uk
Visit: www.stlukeshospice.com/legacies

St Luke's Hospice (Basildon & District) Ltd. | A Company Limited by Guarantee No. 1812104 | Registered office: St. Luke's Hospice, Fobbing Farm, Nethermayne, Basildon SS16 5NJ | Registered Charity Number 289466

St. Luke's Hospice



The Importance of Property Surveys

Although widely misconceived, purchasers do not have to obtain a building survey when they purchase a property. As you will already be aware, as solicitors, we cannot physically inspect your purchase property, and of course, there may be matters beyond our area of legal expertise. We are instructed to investigate the legal title of a property, not the bricks and mortar.

It is also sometimes misconceived that a mortgage lender will carry out their own survey. If you are obtaining a mortgage, your lender will have their own requirements; however, many only arrange for a valuation report to be carried out.

Mortgage lenders usually advise that there may be defects in the property which are not revealed by the inspection carried out by their valuer and that there may be omissions or inaccuracies in the report. They encourage borrowers that they should not rely on a valuation report in deciding whether to proceed with the purchase and to obtain a more detailed report on the condition to determine whether the property is suitable.

Therefore, a survey of the property may be carried out in addition to the legal work and searches that we put in hand. We raise additional enquiries relating to the title of the property, which will supplement the property information forms supplied by the sellers and official searches on the property. After receiving the responses to these questions and the official searches for the property, further information is often required that cannot be answered without a survey.



It is important to remember that the property being purchased will be sold in its current condition, and, in general, the seller is not liable for any defect. It is for the buyer to discover any physical faults in the property.

For this reason, a survey is always advisable to discover physical defects that are not readily apparent on inspection of the property. We usually recommend that our clients arrange for a qualified surveyor to carry out a full structural or building survey.

Emma Clarke
01245 453833
emma.clarke@birkettlong.co.uk

Authorised and regulated by the Solicitors Regulation Authority No. 488404

Basildon
Chelmsford
Colchester

www.birkettlong.co.uk

it's not just about
knowing the law,
it's also about the impact
we have on businesses
and our communities

FOR EXPERT LEGAL ADVICE
PLEASE CONTACT
ENQUIRY@BIRKETTLONG.CO.UK
BIRKETTLONG.CO.UK
01268 244144

hereforgood

MILLER DECORATING

- Dustless Sanding
- Spraying
- Wallpaper Hanging
- Interior & Exterior Decorating
- Residential & Commercial

07930 603915

dave@millerdecorating.info

millerdecorating

Computer repairs & IT Support

Home and Business computer repairs and IT Support
Professional Microsoft Certified Technician
13 years of experience providing IT solutions

Call Andrew on **07590 057809** or **01277 523456**
andrew@a1pcservices.co.uk

Defibrillator Sessions back in 2024!



There will be two Free Defibrillator training sessions, kindly funded by the Trustees of The Reading Rooms, and are planned for 2024.

Places are limited so if you would like to book for either of these, which are held in the Reading Rooms, they would love to hear from you.

Please contact chairman@thereadingrooms.org



Do you or a loved one feel the need for a little more support?



Abbeyfield Archer House, Landon Road, Billericay, CM12 9LD provides assisted living for fit and able, older residents offering a supported, community environment, here in the heart of Billericay.

Our residents enjoy independence and privacy, combined with support, companionship, and nutritious home-cooked meals.

Each room has its own facilities and is furnished by the residents personally.

All rooms have direct access to the delightful garden, and a small patio area for each resident. We've recently added a charming barbeque area.

There is a communal dining room, lounge, conservatory: laundry facilities are also provided, from £1,400/month.

We currently have one vacancy.

For more information, please contact the house manager at:

01277 626 390



Moving home • De-clutter
DIY • Small Businesses
Retiring • Bereavements
Garden Equipment • Renting

MAN AND VAN AVAILABLE

- Collections & Deliveries
- 1 Tonne Hi-Ab
- 12m Cherry Picker

HOW MUCH DOES IT COST?
We have rooms ranging from 10 to 300sqft and prices start as little as £5 a week

DO I HAVE TO SIGN A LEASE?
No. You sign a straightforward storage licence agreement prior to moving into your unit.

- 5 minutes from the highstreet
- Unlimited access during our extensive opening hours
- Ample parking and drive-up access
- Access 365 days a year
- No long term commitments
- Your own padlock, only you hold the key
- Unique security pass - code
- 24hr CCTV cameras

01277 658001 www.stableselfstorage.com
Elmshaws Farm, Tye Common Road, Billericay, CM12 9SB

SHARP'S DECORATING

Interior decorating

Paper stripping, Paper hanging, Painting

References and Portfolio Upon Request

Trading since 1988

Call for Free estimates and advice

Robert Sharp

01245 259245 or 07979 400357



Mark Hatch IOC
CARPENTER & JOINER

Architraves, Skirting, Internal, External Doors & Frames, Garden Gates, Stairs Spindles, Handrails, Built-in Cupboards, Bookcases & Shelving, Study & Bedroom Furniture, Wood Flooring, Staining & Polishing, Furniture Restoration.

01277 625908 07956 444483
www.markhatch.co.uk

A J Turner

Paving Specialist

Brick drives • Tarmacadam
Pattern imprinted concrete drives • Patios
Turving • Brick work • Fencing

For all your outside work call Jay on
01277 375901 or 07887 523455
Paving@ajturnerbuilders.co.uk
WWW.ajturnerbuilders.co.uk

S&D BANKS LTD

Plumbing & Heating

Free Quotations



- Full Central Heating
- Toilets / Sinks & Taps
- Power Flushing
- Pressurised Hot Water
- Bathroom / Shower / Tiling
- Water Heaters / Cookers / Gas Fires
- Electrical Maintenance
- Replacement Boilers
- Landlord Certificates
- Radiators / Pipes / Overflow
- Blocked Drains / Leaks
- Solar Hot Water Installations
- L.P.G., Natural Gas, Oil
- Underfloor Heating

(All work guaranteed – fully insured)

- ★ Landlord Gas Safety Certificate £65.00 + VAT
- ★ Boiler Service from £65.00 + VAT
- ★ Power Flushing from £285.00 + VAT
- ★ Free energy efficiency consultations available on request
- ★ Installer of Air Source Heat Pumps



Billericay 630236 Mobile: 07742 505011/07805 935912 email: sdbanksplumbing@gmail.com www.sdbanksplumbing.com

25 years in the trade

TLC Bathrooms

Full bathroom installations · Plumbing · Wall & Floor Tiling
Electrics · General Maintenance · Silicone sealants

Call us today for a FREE quote!

Steve Reader – based in Billericay

steveread@aol.com www.tlcbathrooms.co.uk

01277 626219 or 07765 400860

www.foxpath.co.uk

F.A.Ingram

Carpentry & Joinery

Fine interiors & bespoke joinery

Advanced City & Guilds qualified
From skirting to loft conversions
Kitchens, cabinets, bathrooms etc

07962 172658
or 01245 600428

MSM Electrical

Looking after all your electrical needs since 1986

We offer:

- Free estimates
- Professional, reliable, and friendly service
- Fault finding
- Extra lighting and power points
- Fully insured

Call Mick on

01277 650839 / 07968 641897 or

Email: msmelec@hotmail.co.uk

CARPET & UPHOLSTERY CLEANING

Ring Steve on 01277 654608 or 07836 337093



Austin Jones Group – Est. Since 1989
www.austinjonesgroup.co.uk



BILLERICAY TOWN FOOTBALL CLUB

Support Your Local Football Club

Dates for your Diary!



BDRA and Town Council Meetings

- **Billericay Town Council Meetings** Planning, **9th, 23rd July, 6th, 20th August, 3rd September**; Finance and General Purposes, **11th July, 27th August, 5th September**; Town Council **25th July, 12th September**.
- **BDRA Meetings Thursday 11th July**. 7.30pm at The Reading Rooms. All members welcome. Contact us on resident@bdra.org No meeting in August. **Thursday 12th September** 7.30pm at The Reading Rooms



Clubs and Societies

- **Basildon Mind** A local Charity focusing on helping people with their mental health. Working with Billericay Pastors, drop-in centre on **Wednesdays** 2-5pm in Community Hub, High St. Billericay. Contacts: 01268 289700, john@basmind.org
- **Billericay Archaeological and Historical Society** meet at The Fold, Laindon Road, **Monday July 8th** The History of the Purfleet Heritage and Military Centre with Paul Hounsell Non-Members £2, Raffle £1, refreshments £1 per person. No meeting in August. **Monday September 9th** Britain's Railways in Edwardian Times with Adrian Wright Contact alantaylor8@btopenworld.com
- **Billericay Art Club at The Fold Thursdays** 9.30-12.30 New members wanted to join small group of friendly, encouraging amateur painters at The Fold Refreshments and free parking available. Call Eileen on 01277 659347 for more information
- **Billericay Flower Arranging Group** meet **on the first Wednesday of each month** at 7.30pm for 8pm start in the W.I. Hall, St. Edith's Lane, Billericay. Visitors welcome at £7 each. Contact Linda Gilbey on 01277 656217 or email ljgilbey@oal.com
- **Billericay Horticultural Society** meet at the Chantry Centre from 8pm-10pm, visitors welcome £3.00. Refreshments available. **15th July** Warley Place, Past and Present with Mick Hedges. 43trouble@gmail.com
- **Billericay Lions Club** meet in The Duchess Suite at The Duke's Head PH **on the second and fourth Mondays every month** 8-10pm. If you would like to make new friends, whilst helping those less fortunate than yourself, please get in touch 0345 833 9849. For more information www.billericaylions.com
- **Billericay Men's Shed** Generally fortnightly – **Mondays** – Coffee n chat, **Tuesdays** – Woodworking, **Wednesdays** – Volunteer supported sessions for those with dementia and their carers. Lake Meadows to the front of the bowls building, just beyond the bowling green. Contact billericaymensshed@gmail.com or phone 07544 752686
- **Billericay Branch of The Mother's Union** meet **on 4th Wednesday each month** at 1pm for 1.30pm start in the Mayflower/Pilgrim Rooms of The Emmanuel Archer Hall 66-68 Laindon Road, Billericay CM12 9LD. We have a variety of Speakers and activities, Contact Pauline 07939102945

- **Billericay and District Parkinsons Support Group** We have **every Monday and Tuesday** at 11.30am at Studio360 our exercise classes; **every other Tuesday** Let's Sing Group meet at 2pm in Christchurch, Wickford, our Walk and Talk Group meet **every Thursday** at 11am at main entrance of Lake Meadows to walk a loop or two and tea at the end; Monthly meeting **on 3rd Saturday of each month** at Emmanuel Hall at 2.30pm.
- **Carers Peer Support Group** Meet at 2pm in Education Room of Billericay Medical Centre **on last Monday of the month**. To book: Contact Jenny. Goodson@carersfirst.org.uk
- **Gone Too Soon** Bereavement support group for Parents who have lost a Son or Daughter in any circumstances and if recent or a while ago. Meet at The Chantry Centre, Chantry Way **Monday 8th July** at 7pm, **Monday 12th August** and **Monday 9th September**. Parents are given a warm and friendly welcome in a safe environment. Contact Lyn on 07387805406 or e-mail lyn-currie@hotmail.co.uk www.gone-too-soon.online
- **Hearing Help Essex** Hearing Aid Support Session. Monthly maintenance sessions for NHS hearing aid users at The Chantry Centre. To book an appointment call 01245 496347, text -07950 406173 or book online at www.hearinghelpessex.org.uk
- **Offshoots Singing Group** meet **on 1st and 3rd Wednesday of each month** at St Johns Church, Outwood Common Rd CM11 2LE from 7.45-9.45pm. No auditions. Parking on site. Contact geoffrudd47@gmail.com or phone 07763424206 We are holding a Concert on **Wednesday 24th July** at 2.30pm, at St John's Church, Outwood Common Rd CM11 2LE. £4 entrance including refreshments. The choir will start rehearsals again at the Church on **4th September** 7.45pm to 9.45pm
- **Photofold Camera Club** meet at The Chantry Centre, Chantry Way **on Tuesdays** 8-10pm, doors open at 7.30pm. Info at www.photofold.org.uk
- **Probus Retired Men's Club** Join other retired professional and businessmen at our **monthly** lunch, usually with a Speaker. Contact Steve on 07817 694980 or stevejk88@outlook.com for more details.
- **Billericay Ladies Probus Club** If you are retired and would like to make new friends, join us for a **monthly** lunch, chat and speaker. Contact stephanie4probus@gmail.com for more details.
- **Remus Horse Sanctuary** **7th July, 1st September** Novelty Dog Show and Family Fun Day 1pm to 4pm; **12th July** AGM The Reading Rooms, Billericay 3-4pm; **14th July** Summer Sale at Stock Village Hall 11am to 2.00pm; **15th July, 29th July 12th August, 9th September** Afternoon Tea at The Sanctuary. Starts 2.15pm Cost £25 per person; **20th July** Summer Sale at Billericay Reading Rooms 9am to 4pm; **28th July, 25th August** Online Auction via Remus Facebook Page. Starts 11am; **28th July, 25th August** Curry Lunch at Nirvana Indian Restaurant, Ingatestone. £20 per person. 2pm for 2.15pm start. Booking essential; **4th August** Open Day at The Sanctuary. 1pm-4pm Contact <https://www.remus-sanctuary.org/events>.
- **Royal British Legion** Billericay Branch meets **on last Wednesday of the month** at 8pm in the Chantry Centre. You don't have to have served in the Forces to join or help. Contact Derek on 07757 313688, derekgprior@hotmail.com

- **Spike's Place Jazz Club** Bardswell Social Club, Weald Rd, Brentwood CM14 4TJ 8pm start. Phone 01245 420475. www.spikesplace.co.uk. Prices on website, Fully accessible. **Tuesday 2nd July** Alan Barnes and Al Nicholls with Richard Busiakiewicz Simon Thorpe and Matt Fishwick; **9th July** From the USA Greg Abate with John Pearce, Simon Thorpe and Alfonso Vitale; **16th July** Mick Foster with Dominic Ashworth, Tom Farmer and Tristan Maillot; **23rd July** Sarah Monte with Simon Wallace, Alec Dankworth and Paul Robinson.
- **Stock Brook Ladies Probud Group** meets on the **3rd Wednesday of each month** to listen to a speaker and take lunch together at Crondon Park Golf Club. All are welcome. Please contact stockbrookladiesprobud@talktalk.net for more details.
- **APPLE Bridge** Friendly EBU affiliated Club meets at Hannakins Farm, Rosebay Avenue on **Wednesdays** for duplicate sessions at 9.30. Sessions cost £3. Bring own refreshments. Contact 07552 753075
- **Venturers' Bridge Club** meet on **Thursdays** 1.15pm at Hannakins Farm, Rosebay Avenue for social bridge in a friendly environment. £4.00 per session. Contact graham@forsythe.co.uk

The WI

- **Billericay WI** meet at the WI Hall, St. Edith's Lane at 2pm on the **first and third Wednesday of each month**. Contact 01277 624255.
- **Buttsbury (Billericay) WI** meet on the **2nd Tuesday of the month** at Canon Roche Hall 8pm-10pm. New members welcome. For more details contact Jan Nash on 01277 630147

- **Little Burstead WI** meet on the **second Thursday of the month** from 2pm-4pm at Little Burstead Village Hall. Contact 01268 491396
- **South Green WI** meet on the **third Thursday of the month** at South Green Memorial Hall, Southend Road. CM11 2PR. Contact 01277 652739



Fitness and Sport

- **Billericay parkrun** Every **Saturday** 8.45am at Lake Meadows, parkrun provides a free, timed 5k run, jog or walk for all standards from 4years+ Visit www.parkrun.org.uk/billericay or visit our Facebook page.
- **Lake Meadows junior parkrun** Every **Sunday** at 8.45am at Lake Meadows, parkrun provides a free, timed 2k run, jog or walk for all standards from 4-14 years. Visit www.parkrun.org.uk/lakemeadows-juniors/ or visit our Facebook page: Lake Meadows junior parkrun.
- **Billericay Town Walking Football** We train at Billericay Town FC. Men 50+ on **Mondays** 8pm-9.30pm and **Thursdays** 10am-12pm (£6 per session) **Mondays** 7pm-8pm for Ladies 40+ (£5 per session). E-mail Bill at btfcwf@gmail.com
- **Outwood Common Tenants and Residents** – Seated Yoga **Friday** 11.15-11.45am at St John's Church. £1 a session. Open to everyone of all ages and abilities

To advertise your event here, please email resident@bdra.org

Deadline for the next issue is 10th August for events taking place between 10th September and 9th October.

Computer Problems?

Don't struggle to carry it up to the shop or put up with expensive call out charges.

Call Gary Mander,
Computer Technician
on 01277 636358
for a no obligation chat

Gary@PCTechnician.co.uk

No Call Out Charge!



HANDYMAN

HOME REPAIRS

GENERAL BUILDING SERVICES

01277 562095

www.mayhomeimprovement.co.uk
info@mayhomeimprovement.co.uk



THE
CHIROPRACTIC CENTRE
BILLERICAY • BRENTWOOD

DO YOU HAVE PAIN?

Call us **TODAY** on
01277 631025



- Low back pain
- Neck pain (including Whiplash)
- Hip and knee osteoarthritis
- Shoulder pain
- "Frozen" shoulder
- Tennis elbow
- Knee pain
- Plantar Fasciitis
- Dizziness (cervicogenic)
- Migraine and headaches



Billericay District Residents' Association **COACH TRIPS**



**ON THE DAY OF THE TRIP ONLY
THE EMERGENCY CONTACT
NUMBER IS 07518 122647**

Please note that all payments should be made as soon as possible and sent to the person named on the trip advertisement. Cheques should be made payable to BDRA and the trip title shown on the back of the cheque.
Departure points for all trips:

QPR – Queens Park Roundabout (for holiday trip only), GG – Gooseberry Green, bus stop at roundabout,
OA – Orchard Avenue, approaching Stock Road, LR – Laindon Road, bus stop between Sun Corner and
the fire station, SG – South Green, bus stop to Wickford, opposite the retirement apartments

Please note – When a trip is confirmed the fare must be paid as soon as possible.

If you are a solo traveller on a trip, we ask you to provide a contact number when booking, in case of an emergency on the trip.

TUESDAY 23RD JULY – A MORNING TOUR OF THE LAVENDER FIELDS AT CASTLE FARM IN KENT FOLLOWED BY AN AFTERNOON VISIT TO POLHILL GARDEN CENTRE **SEATS AVAILABLE – PLEASE PAY NOW**

Our guided tour at Castle Farm, in Shoreham Kent looks behind the scenes of Lavender growing and essential oil production. Our tour includes a drink and lavender shortbread. Visit The Lavender Barn to enjoy the selection of lavender products, made using essential oils produced on the farm. After, relax outside The Coffee Cart with barista-made hot drinks, cold drinks, ice creams & snacks, before we head to Polhill Garden Centre. It is impossible to list everything Polhill offers, along with everything for your garden, outdoor & indoor living, cookery, wildlife care, toys, etc. etc. Novell's Restaurant has an extensive lunch menu, from both light bites to main meals.

Cost: £34.00 Coach, Lavender Tour & Polhill Garden Centre.

Depart: GG 08.15am. OA 08.20am. LR 08.25am. SG 8.30am. Back in Billericay approximately 5.30pm.

**Yvonne Cave, 11 The Vale, Stock, Ingatestone,
Essex CM4 9PW. Telephone 01277 840560**

WEDNESDAY 21ST AUGUST – MORNING IN DEAL – AFTERNOON TOUR OF RAMSGATE WARTIME TUNNELS

Quaint, quirky & one of the most charming coastal towns in Kent. Deal in White Cliffs Country is steeped in history. See a range of Maritime exhibits in Deal Museum, the Timeball Tower Museum, or explore one of the historical castles in Deal. Deal is an award winning High Street, with a wealth of great places to eat, waterfront Bistros serving locally caught fish & many independent shops to visit. This afternoon to travel to Ramsgate for our guided tour of the largest network of wartime tunnels, discover how the tunnels were built, listen to the stories of life underground and the "Mad Mayor" who saved the town.

Cost: Coach & Guided Tour £27.00

Depart: GG 08.00am. OA 08.05am. LR 08.15am. SG 08.30am. Back in Billericay approximately 6.30pm.

Please telephone to book after 9.00am on Sunday 14th July

**Yvonne Cave, 11 The Vale, Stock, Ingatestone,
Essex CM4 9PW. Telephone 01277 840560**

TUESDAY 10TH SEPTEMBER 2024 – 2 HOUR THAMES CRUISE WITH PLOUGHMANS LUNCH

We board our boat at 12 noon. This cruise provides excellent views of Windsor Castle, Eton College, Windsor race course and lots of other places of interest. The ploughman's lunch which is served at 1pm consists of cheese, ham, coleslaw, green salad with tomatoes, pickled onion, gherkins, pickle and a roll this is followed by a slice of cake and tea or coffee. The afternoon will be free to explore Windsor. Please mention any dietary requirements at the time of booking.

Cost: Includes coach, cruise and lunch £52.00

Depart: GG 9.30am. OA 9.35am. LR 9.45am. SG 9.50am. Back in Billericay approximately 6.30pm.

Please telephone to book after 9.00am on Tuesday 18th June

**Kathleen Fox, 72 Perry Street, Billericay,
Essex CM12 0ND. Telephone 01277 622342**

THURSDAY 21ST NOVEMBER 2024 – ELY CATHEDRAL CHRISTMAS GIFT AND FOOD FAIR

(Due to the restriction on coaches again this year this trip is being advertised early but the money won't be required till later in the year. I will run another coach if there is the demand)

This hugely successful Christmas gift and food fair is one of East Anglia's exceptional shopping experiences. Over 150 stalls will be exhibiting this year in the cathedral along with the festive food hall, offering its usual array of edible delights. Throughout the event you can enjoy regular floral presentations and seasonal cookery demonstrations. Musical entertainment will be provided by the cathedral choristers. Food and drink is available to purchase in the heated Cafe Marquee. You might like to visit Oliver Cromwell's house cost £7.50.

Cost: £25.00 which includes coach and entry to the cathedral fair.

Depart: GG 8.30am. OA 8.35am. LR 8.45am. SG 8.50am. Back in Billericay approximately 6.00pm.

Please telephone to book after 9.00am on Thursday 20th June

**Kathleen Fox, 72 Perry Street, Billericay,
Essex CM12 0ND. Telephone 01277 622342**

TUESDAY 29TH OCTOBER 2024 – ROMFORD DOG STADIUM WITH THREE COURSE LUNCH

Join us today for fun day out at the Romford Dog Stadium. You will enjoy a three course lunch with tea or coffee while you sit and watch the racing and maybe have a flutter. The menu is - Starters - soup of the day, cheese ham and tomato tart or prawn platter. Main Course - pasta Bolognese, slow cooked pork, fish burger, or cauliflower cheese tart. Desert - spotted dick, chocolate fudge cake or mixed ice cream followed by tea or coffee (to be chosen on the day).

Cost: Includes coach, entry and lunch £31.50.

Depart: GG 11.30am. OA 11.35am. LR 11.45am. SG 11.50am. Back in Billericay approximately 6.00pm.

Please telephone to book after 9.00am on Wednesday 19th June

**Kathleen Fox, 72 Perry Street, Billericay,
Essex CM12 0ND. Telephone 01277 622342**

WEDNESDAY 18TH DECEMBER 2024 – JACK AND THE BEANSTALK AT THE CLIFFS PAVILION STARRING RYLAN – EVENING PERFORMANCE

Doomed to sell his trusty cow, join Jack and his family as they fight to outwit the evil giant, win richest beyond his wildest dreams and the hand of the girl he loves. We have secured raised back stalls seats, so book your ticket and expect laughs, music, special effects, magic beans & bundles of audience participation in this giant of a performance.

Cost: Coach and Theatre Ticket £53.00.

Depart: GG 4.45pm. OA 4.50pm. LR 4.55pm SG 5.00pm. Back in Billericay approximately 10.00pm.

Please telephone to book after 9.00am on Friday 12th July

**Yvonne Cave, 11 The Vale, Stock, Ingatestone,
Essex CM4 9PW. Telephone 01277 840560**

If concession prices are quoted (i.e. seniors, children) these should be requested at the time of booking or the full price will apply.
In the event that you need to cancel all efforts will be made to resell your tickets, however if we are unable to resell your tickets you are liable for payment.

PRIVACY NOTICE We understand that you consented to BDRA holding personal details about you when you subscribed as a member of the Billericay District residents' Association and a recipient of the Resident magazine. The information which we hold is your name and address, and we may hold additional information which you have provided such as your email address and/or telephone number. We hold this data for the purpose of delivering the Resident Magazine to you and to collect and administer your subscription payments. We will hold your personal information only for as long as is necessary for these purposes. Personal data is held securely and will not be shared with any third parties. You have the right to request to see what information we hold about you. You have the right to instruct us to delete your personal information from our records at any time. This would result in the termination of your membership of the BDRA.